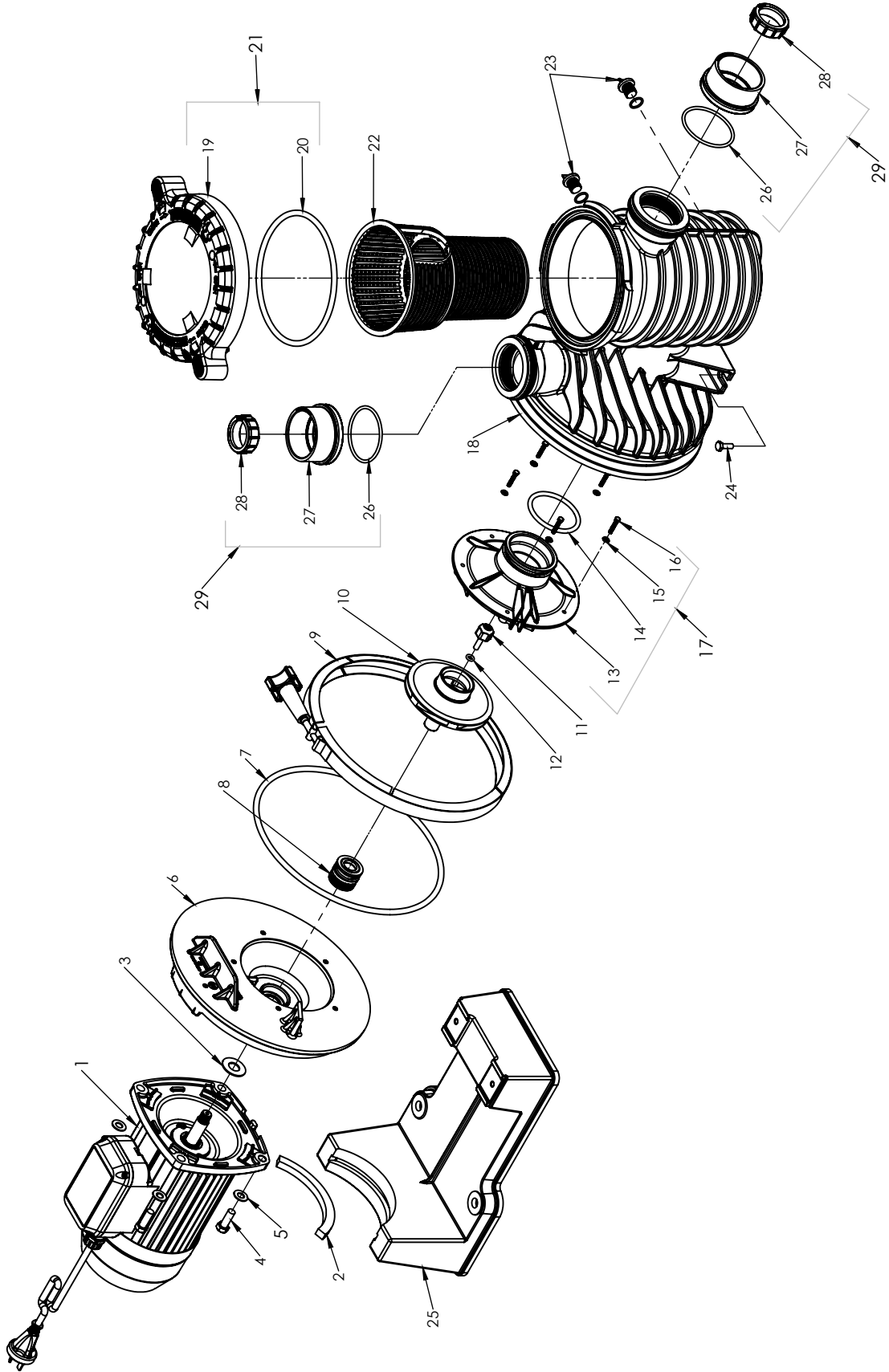


# MAX-E-PRO® SERIES PUMP REPLACEMENT PARTS



<sup>5</sup> Pumps built after 8/29/07.

<sup>6</sup> Pumps built on or before 8/29/07.

# MAX-E-PRO® SERIES PUMP (CONT'D)

## REPLACEMENT PARTS

Item	Description	Part No.	Part No.	Part No.	Part No.	Part No.	Part No.	Part No.	Part No.
		MP730100	MP930100	MP110100	MP108100	MP1500100	MP1508100	MP2201100	MP2208100
1	MOTOR 1 Phase	801418	801419	801419	801366	801420	800565	801482	800565
2	Motor Pad	C35-44	C35-44	C35-44	C35-44	C35-44	C35-44	C35-44	C35-44
3	Water Slinger				Comes with Motor				
4	Screw 3/8inUNC x 1in Hex Hd S/St	702594	702594	702594	702594	702594	702594	702594	702594
5	Washer 3/8in x 3/4in x 18g St/St	703107	703107	703107	703107	703107	703107	703107	703107
6	Seal Plate	C103-194PSSG	C103-194PSSG	C103-194PSSG	C103-194PSSG	C103-194PSSG	C103-194PSSG	C103-194PSSG	C103-194PSSG
7	O-ring - Body	U9-228A	U9-228A	U9-228A	U9-228A	U9-228A	U9-228A	U9-228A	U9-228A
8	Seal	801428	801428	801428	801428	801428	801428	801428	801428
9	Clamp	C19-37A	C19-37A	C19-37A	C19-37A	C19-37A	C19-37A	C19-37A	C19-37A
10	Impeller Assembly (Includes 11 & 12)	C105-238PPB	C105-238PRB	C105-238PSB	C105-238PSB	C105-238PLBAB	C105-238PLBAB	C105-238PHAB	C105-238PHAB
11	Impeller Screw (3 phase only)				See Impeller				
12	O-RING Impeller Screw (3 phase only)				See Impeller				
13	Diffuser	C1-271P1	C1-271P1	C1-271P1	C1-271P1	C1-271P1	C1-271P1	C1-271P1	C1-271P1
14	O-RING DIFFUSER	U9-374	U9-374	U9-374	U9-374	U9-374	U9-374	U9-374	U9-374
15	Lockwasher				No longer required				
16	Screw - Diffuser	707371	707371	707371	707371	707371	707371	707371	707371
17	Diffuser kit (Includes 13,14,15 and 16)	801273	801273	801273	801273	801274	801274	801274	801274
18	Tank Body Assembly (specify assembly from US)	17307-0110W	17307-0110W	17307-0110W	17307-0110W	17307-0110W	17307-0110W	17307-0110W	17307-0110W
19	Trap Cover	C3-185P	C3-185P	C3-185P	C3-185P	C3-185P	C3-185P	C3-185P	C3-185P
20	O-ring - Trap Cover	35505-1440	35505-1440	35505-1440	35505-1440	35505-1440	35505-1440	35505-1440	35505-1440
22	Basket	C8-58P	C8-58P	C8-58P	C8-58P	C8-58P	C8-58P	C8-58P	C8-58P
23	Drain Plug & O-ring	U178-920P	U178-920P	U178-920P	U178-920P	U178-920P	U178-920P	U178-920P	U178-920P
24	Screw - Base	SRU30-918SS	SRU30-918SS	SRU30-918SS	SRU30-918SS	SRU30-918SS	SRU30-918SS	SRU30-918SS	SRU30-918SS
25	Base with Motor Pad and screws	C4-79P	C4-79P	C4-79P	C4-79P	C4-79P	C4-79P	C4-79P	C4-79P
26	ORING - Collar Union				See Union Kit				
27	Collar Union Slip - 2"				See Union Kit				
28	Collar Union - 2"				See Union Kit				
29	Union kit (Includes 26, 27 and 28 x2)	801245K	801245K	801245K	801245K	801245K	801245K	801245K	801245K

Product on pages 10-11.

Genuine Onga Spare Parts Supplied By:



Freephone 0508 634 341

7 Monier Pl, Mt Wellington, Auckland 1060, New Zealand