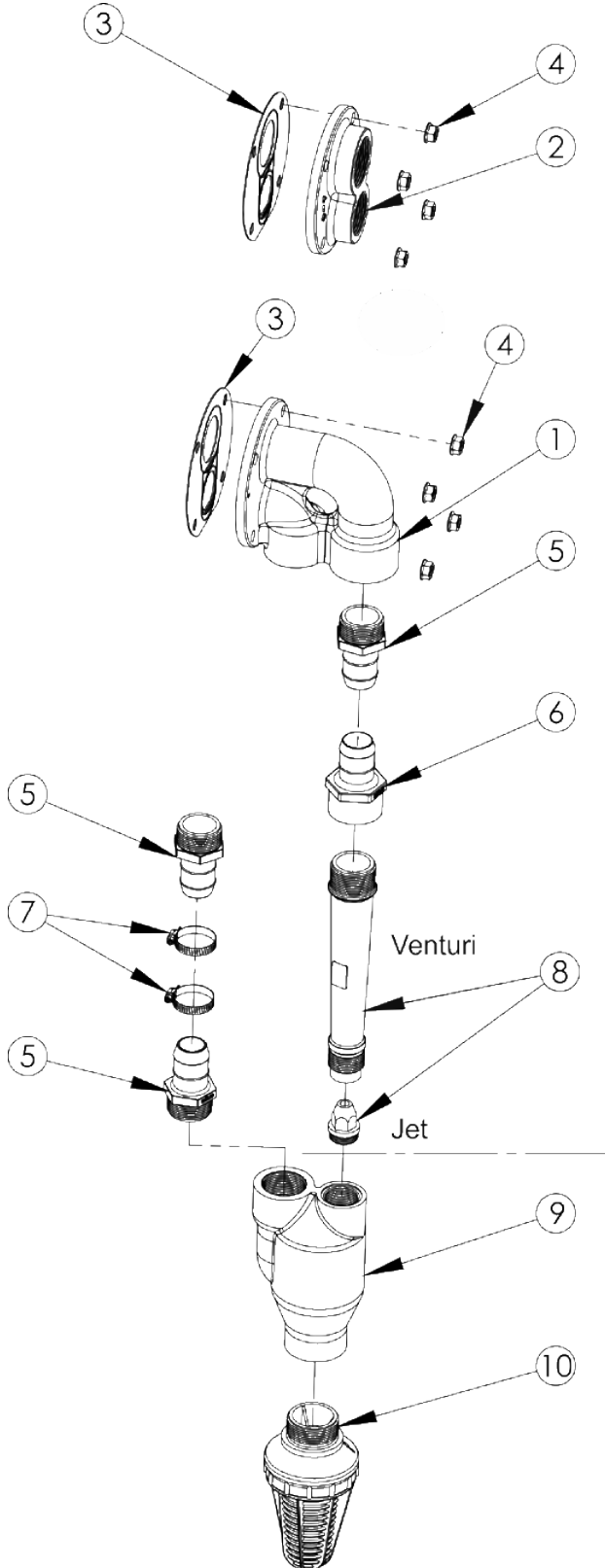


EXPLODED VIEW PARTS LIST TABLE

DW Injector RANGE

Drawings are indicative only, product appearance may change slightly.



Deep Well Injector Models

REF NO.	COMPONENT DESCRIPTION	PART NO.	
1	ELBOW	502860GN	1PC
2	FLANGE OFFSET	500100GN	1PC
3	GASKET	-	1PC
4	GASKET & NUTS KIT (INC. 3 & 4)	800014	1PC
5	END CONNECTORS (MALE)	-	1PC
	1" BSP Male - 1" Poly	601668	1PC
	1" BSP Male - 1 1/4" Poly	601666	1PC
	1 1/4" BSP Male - 1" Poly	601667	1PC
	1 1/4" BSP Male - 1 1/4" Poly	601664	1PC
	1 1/4" BSP Male - 1 1/2" Poly	601662	1PC
	1 1/2" BSP Male - 1 1/4" Poly	504230	1PC
	1 1/2" BSP Male - 1 1/2" Poly	601669	1PC
6	END CONNECTORS (FEMALE)	-	1PC
	1 1/4" BSP Female - 1 1/4" Poly	601665	1PC
	1 1/4" BSP Female - 1 1/2" Poly	601663	1PC
7	HOSE CLIPS		
	No. 1 Stainless Steel	700082	1PC
	No. 2 Stainless Steel	700083	1PC
	No. 3 Stainless Steel	700084	1PC
8	JET & VENTURI KITS	-	1PC
	D411	801042	1PC
	D413	801044	1PC
	D414	801045	1PC
	D415	801042	1PC
	D417	801132	1PC
	D511	801048	1PC
	D513	801050	1PC
	D514	801051	1PC
	D515	801052	1PC
	D516	801053	1PC
	D518	801052	1PC
	D519	801053	1PC
	D520	801115	1PC
	D521	801133	1PC
	D523	801134	1PC
	D611	801058	1PC
	D612	801059	1PC
	D613	801060	1PC
	D616	801063	1PC
D617	801060	1PC	
D618	801116	1PC	
D619	801117	1PC	
D620	801050	1PC	
9	HOUSING	-	1PC
	4" [D411 - D523] 5" [D611 - D620]	505040 500110	1PC 1PC
10	FOOTVALVE	510140	1PC
	HOUSING & OFFSET KITS (INC. 2 & 9)	-	1PC
	D4	800576	1PC
	D5	800577	1PC
	D6	800578	1PC
	HOUSING & ELBOW KITS (INC. 1 & 9)	-	1PC
	D4	800492	1PC
	D5	800493	1PC
	D6	800494	1PC
	D6 [4" Inj.]	800401	1PC

FARMMASTER RANGE

Genuine Onga Spare Parts Supplied By:



Freephone 0508 634 341

7 Monier Pl, Mt Wellington, Auckland 1060, New Zealand